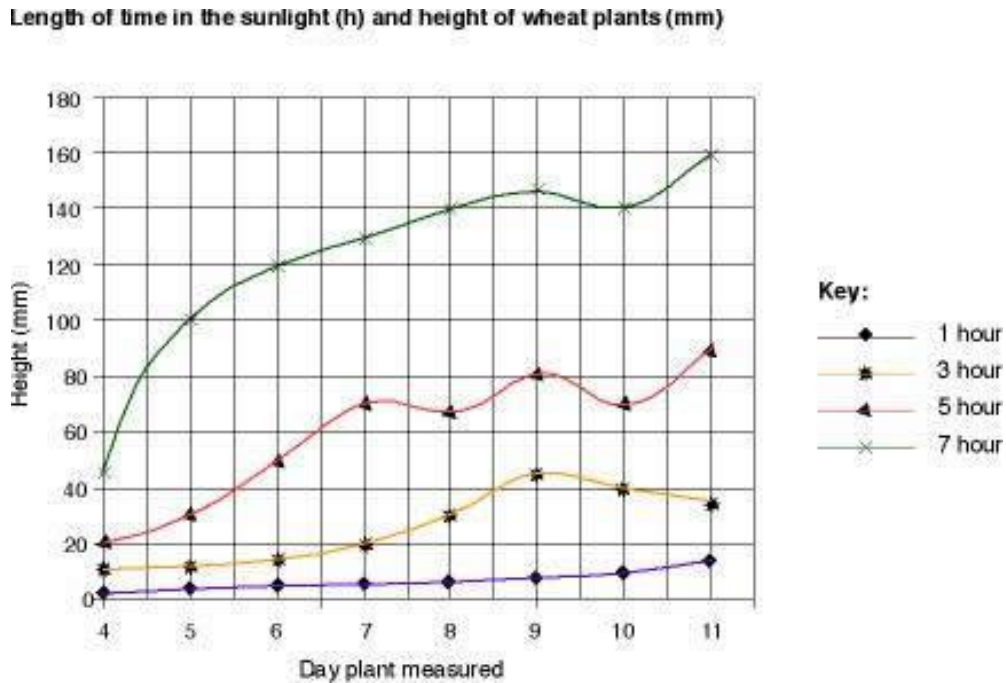


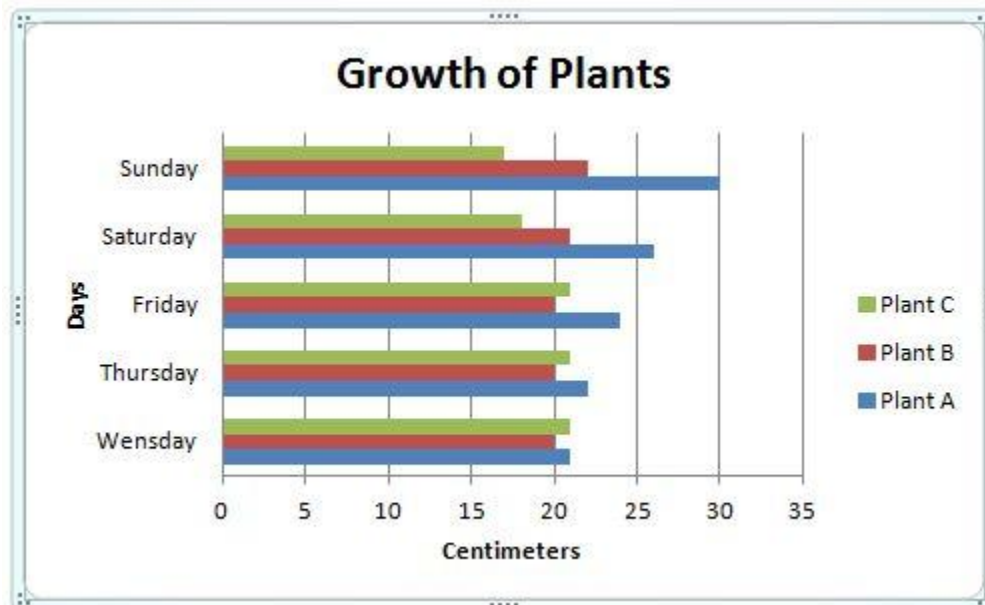
# GRAPHS REVISITED

Answer each of the following questions on lined paper using complete sentences.

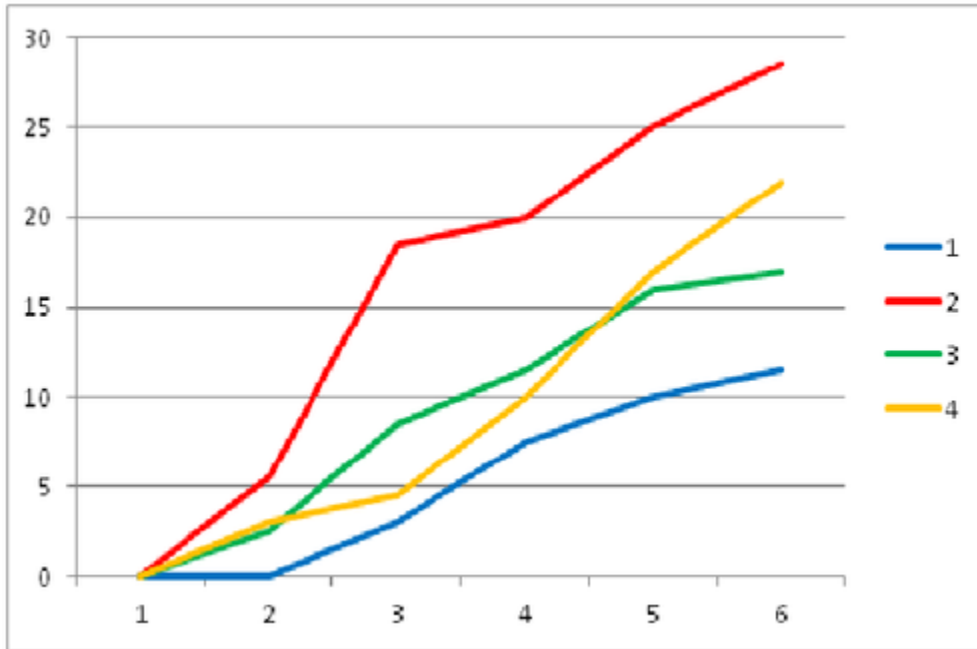
- Look at the following graph. (a) *What is the experimental question?* (b) *What conclusion can you draw from the data?*



- Look at the following graph. (a) *What is wrong with this graph for plant growth (besides misspelling Wednesday)?* (b) **Graph the data for Plant A correctly on a sheet of graph paper.** (c) *What could you infer about Plant C's growth?*



3. Look at the following graph for plant growth. (a) *What would be correct labels for the axes?* (b) *What title might you give this graph?* (you may choose to answer **these** questions with a sketch showing correct axes and title)



4. Look at the following data for germination of seeds. *What is the germination rate for this lab* (percent of seeds that germinated)?

**SEEDS GERMINATED (from planting 4 seeds)**

<b>name</b>	<b>germinated</b>	<b>name</b>	<b>germinated</b>	<b>name</b>	<b>germinated</b>	<b>name</b>	<b>germinated</b>
Tanis	2	Ethan	3	Alex	4	Megan	4
Ashley	4	Drake	3	Ryan	4	Jordin	3
Chris	4	Sean	4	Kyle	2	Max	4
Devon	4	Megan	2	Chloe	3	Loran	4
Cody	3	David	2	Chase	4	Jesica	3
Tyler	2	Kelby	3	Reed	3	Jesse	2
Emily	3	John	3	Kayla	4	Abby	4

5. The seeds we used to check for germination were from a plant called *Brassica rapa*. What is the **species** name for *Brassica rapa*?